

KINGS MEWS

LONDON WC1

Kings Mews is a newly built boutique scheme of 5 homes in the heart of Bloomsbury. The development is comprised of 1, 2 and 3 bed homes and is within walking distance of Gray's and Lincolns Inn, The London School of Economics, University College London, King's College London and King's Cross.

A quiet residential mews street between Covent Garden and the City of London, James Taylor Homes and MAA architects have created 5 beautifully appointed new-build apartments compiling of 1, 2 and 3 bedrooms

In the heart of London's Legal and Educational districts the apartments are within walking distance of London School of Economic, University College London & King's College London. With Chancery Lane and Holborn tube stations close by. All the homes are dual aspect and generously proportioned. The duplex's on the ground floor have excellent ceiling heights and the upper floors all benefit from great natural light.

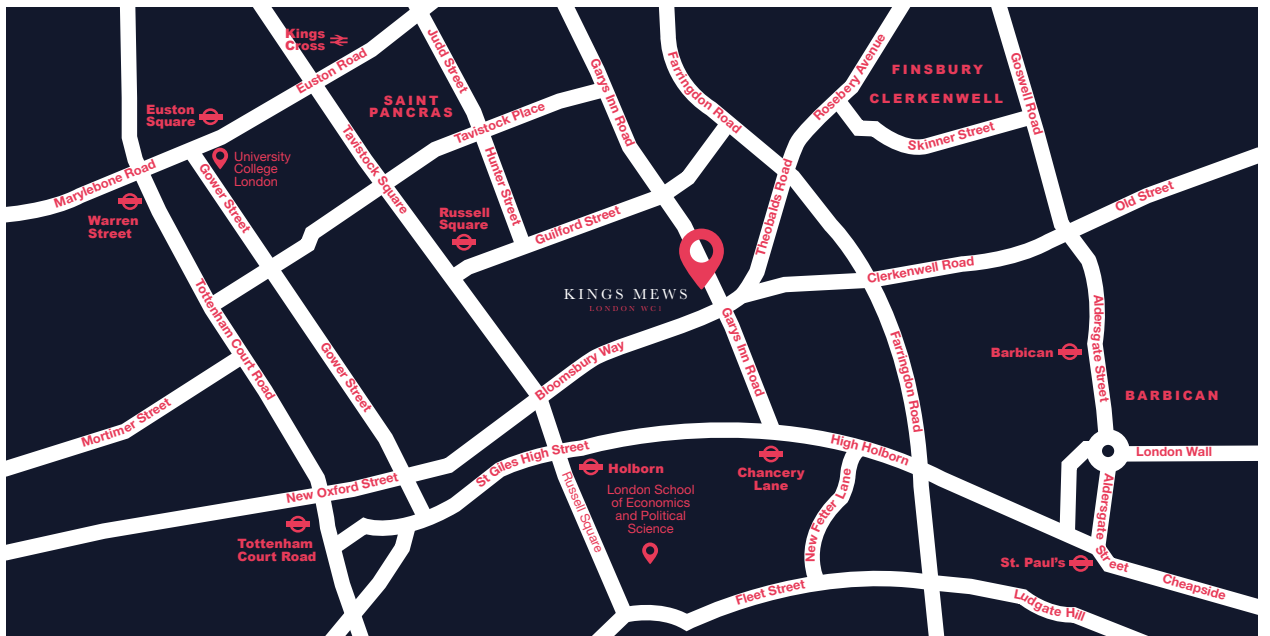
The apartments are all open plan design and ideal for modern living, with a superb, contemporary specification specially design to complement each apartment.

Specification

- Bespoke hand crafted kitchens
- Integrated NEFF appliances
- Induction hob
- White gloss work tops
- Glass splash back
- Full height wardrobes in master bedroom
- Westex prestige sheep skin carpets
- Wooden floors within living spaces and hallways
- Video entrance phone system
- Dual Aspect
- Building warranty





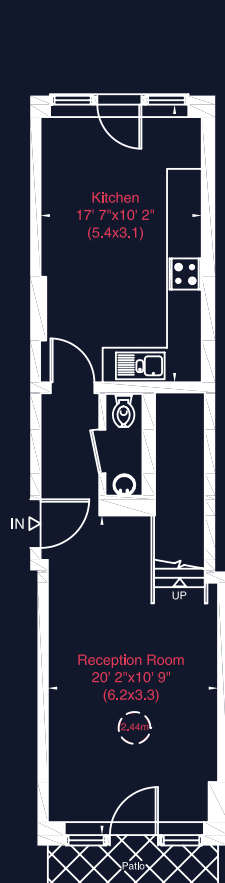


Unit	Floor	Bed	NIA(Sq M)	NIA(Sq Ft)	Price
1	Grd/Lwr Grd	3	118	1,272	£1,550,000
2	Grd/Lwr Grd	3	119	1,281	£1,550,000
3	First	2	68	736	£1,250,000
4	First	1	55	592	£995,000
5	Second	2	80	863	£1,525,000
Total			440	4,744	£6,870,000

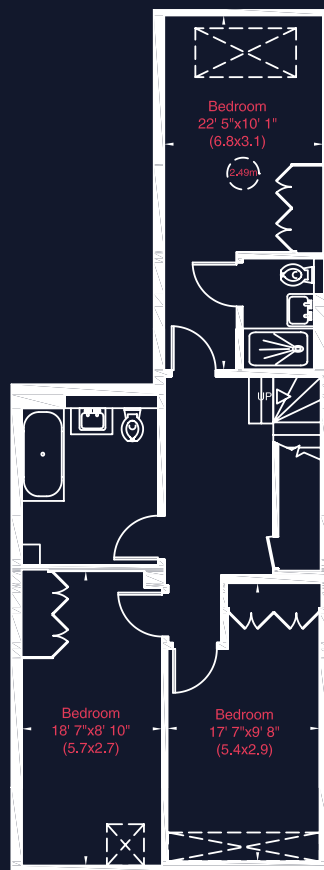


Apartment 1

Gross Internal Area (approx.)
118 sq m (1,272 sq ft)



Ground Floor

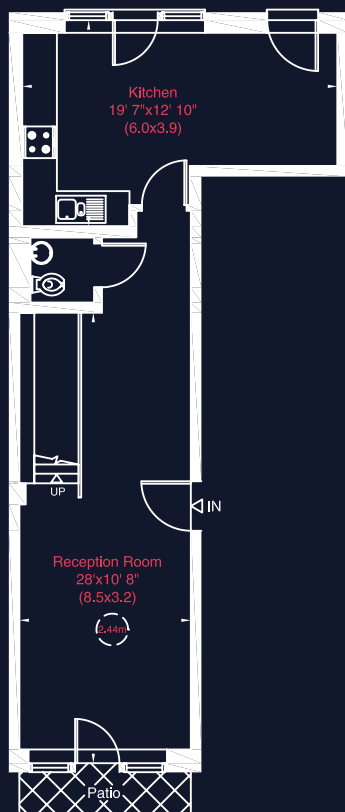


Lower Ground Floor

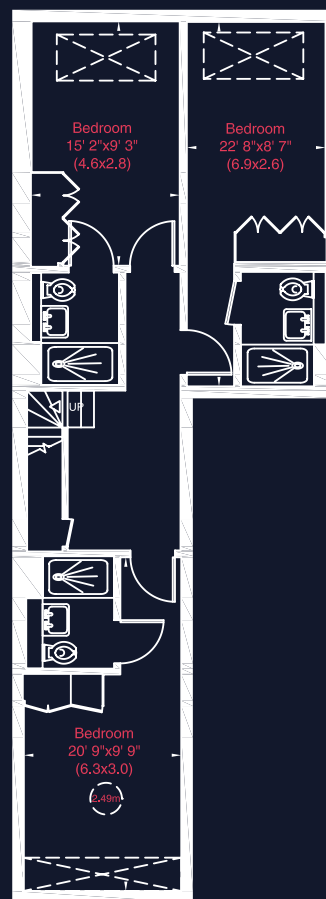


Apartment 2

Gross Internal Area (approx.)
119 sq m (1,281 sq ft)



Ground Floor

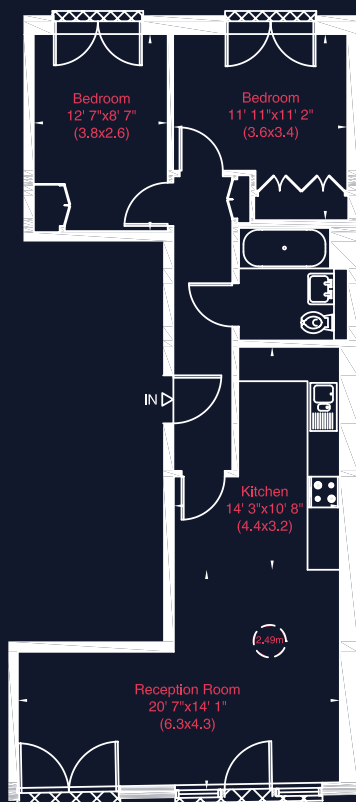


Lower Ground Floor



Apartment 3

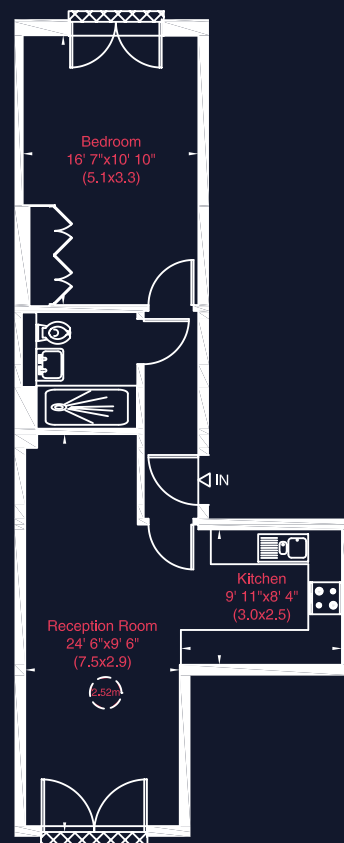
Gross Internal Area (approx.)
68 sq m (736 sq ft)



First Floor

Apartment 4

Gross Internal Area (approx.)
55 sq m (592 sq ft)



First Floor

Apartment 5

Gross Internal Area (approx.)
80 sq m (863 sq ft)



Second Floor

